



# PP STRATEGY SUMMARY 2024-2025

## Wood Fold Primary School

### 1 Teaching

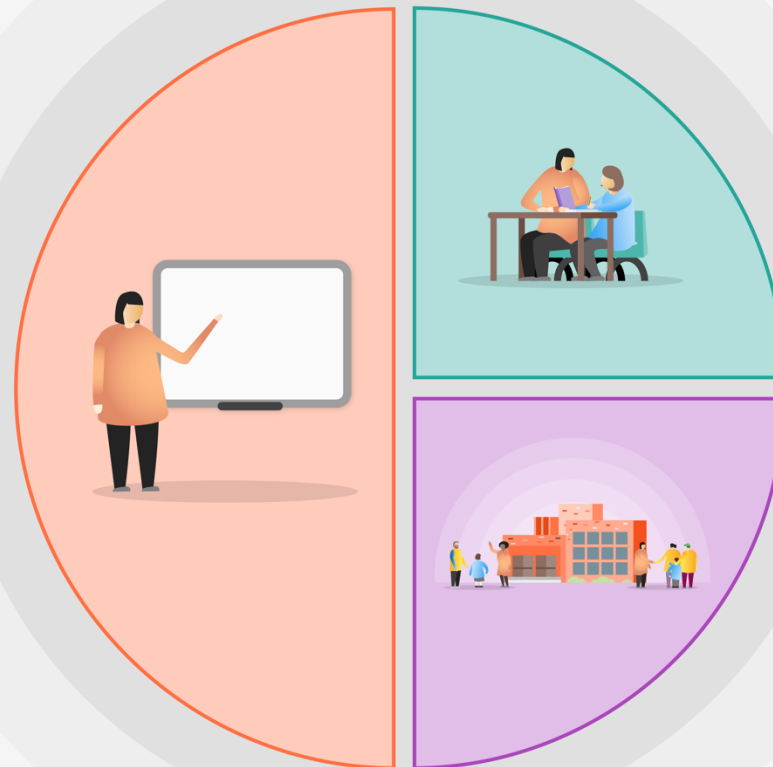
Embed Sounds and Syllables teaching across KS2 to ensure effective delivery of high-quality whole class spelling sessions.

Sounds Write to be taught daily to all Reception, Year 1 and Year 2 children.

Develop teachers' professional knowledge on the use of formative assessment to better support teaching and learning.

Embed Instructional Coaching in the school's monitoring cycle to provide meaningful small, actionable steps of feedback.

Continue to use WALKTHRU strategies and Rosenshine principles to improve, develop and support classroom practice.



### 2 Targeted academic support

Use of 1:1 / small group specialised interventions (Sounds Write Phonics, 1:1 reading, Little Wandle Fluency programme and White Rose Maths.)

To train and develop staff in the use of ELKLAN to develop children's speech and language skills.

Teaching Assistants deployed in all classrooms to support with the learning of children.

### 3 Wider strategies

Dedicated Pastoral Lead and pastoral support to provide tailored provision, including counselling.

Ensuring sustainability of Forest Schools approach by adopting an outdoor learning model and Training Forest Schools Leads so more pupils can access.

Subsidise the cost of residential visits and other school curriculum visits.